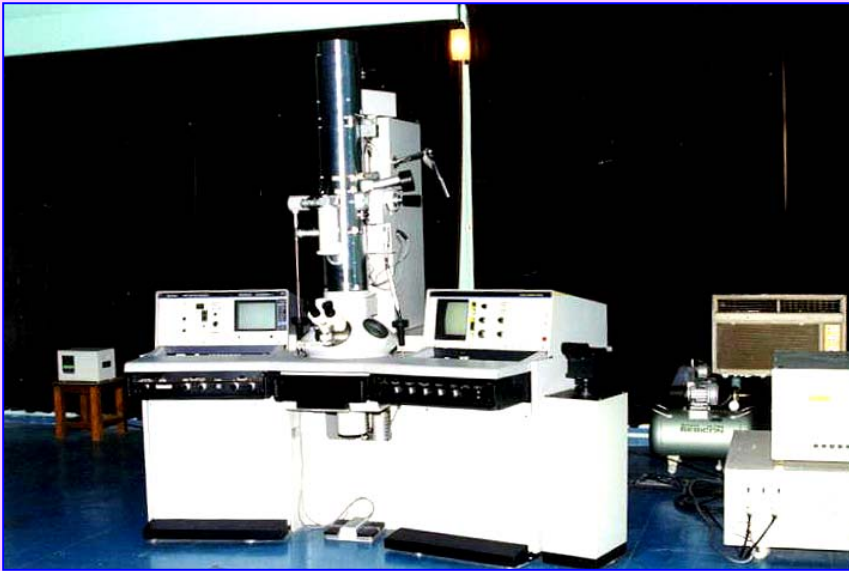


## Pathology and Immuno diagnostics



- Indirect plate ELISA and indirect dot- ELISA techniques developed for rapid detection of *Vibrio parahaemolyticus*
- Ultrastructure of the white spot syndrome virus characterized
- A referral facility of marine microbial pathogens has been set up

- A putative probiotic bacterial strain G23 (*Bacillus* sp.) from healthy shrimp gut, significantly improved disease resistance and immunological responses in *Fenneropenaeus indicus*
- The immune systems of the lobster *Panulirus homarus*, shrimp *Penaeus indicus*, and the edible oyster *Crassostrea madrasensis* characterized

