

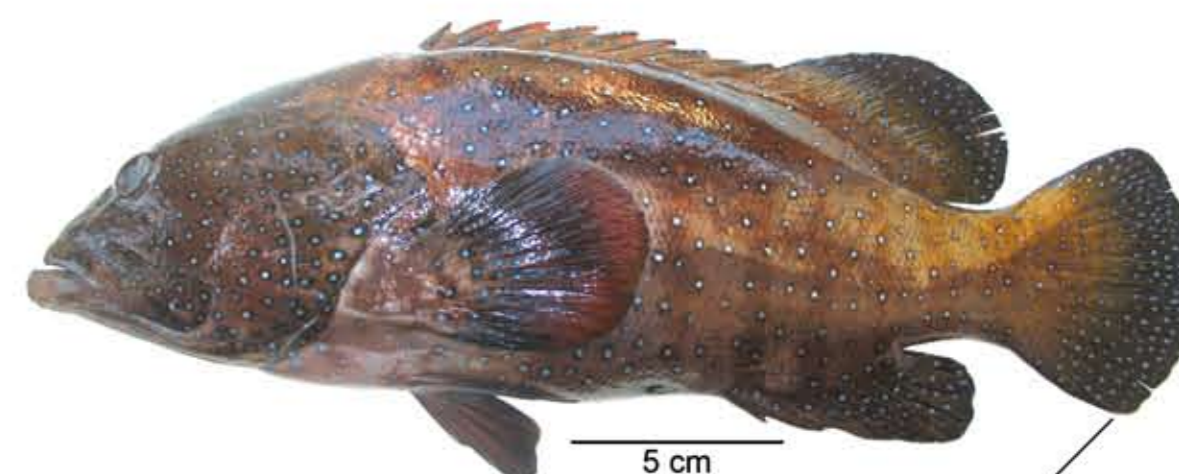
ग्रूपेर्स GROUPERS



Aethaloperca rogaa (Forsskal, 1775)
Redmouth grouper



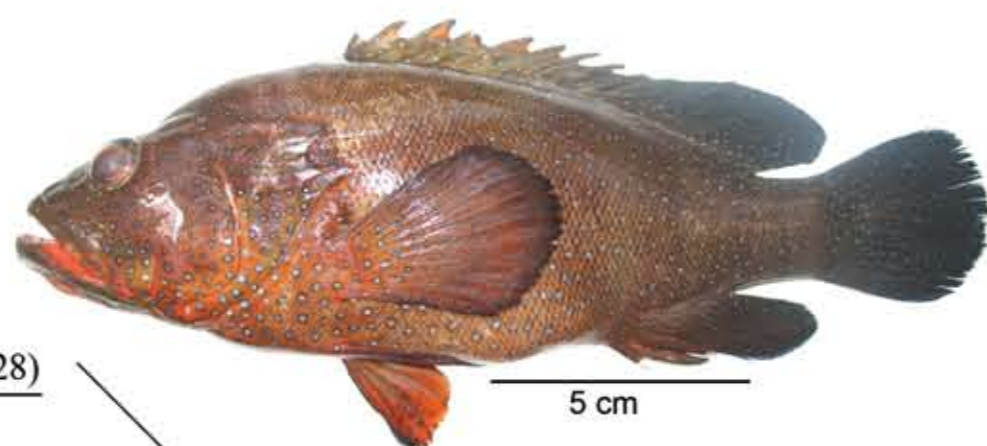
Anyperodon leucogrammicus (Valenciennes, 1828)
Slender grouper



Cephalopholis argus Schneider, 1801
Peacock hind



Cephalopholis aurantia (Valenciennes, 1828)
Golden hind



Cephalopholis cyanostigma (Valenciennes, 1828)
Bluespotted hind



Cephalopholis formosa (Shaw, 1812)
Bluelined hind



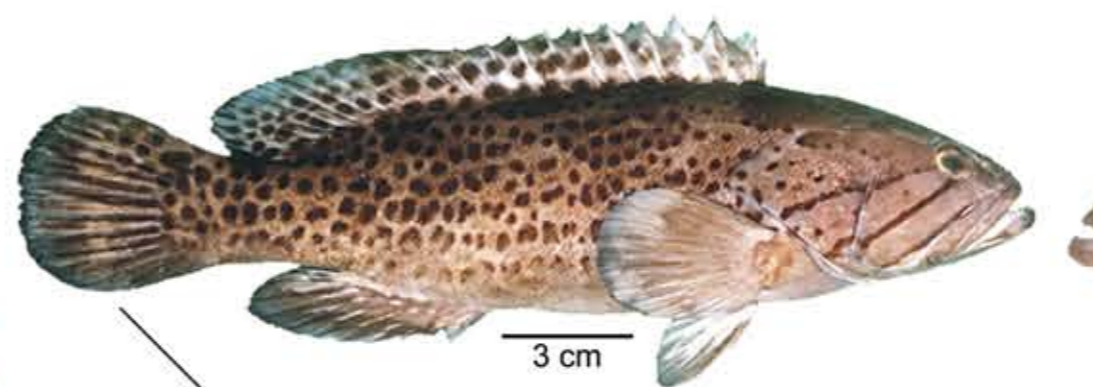
Cephalopholis miniata (Forsskal, 1775)
Coral hind



Cephalopholis sonnerati (Valenciennes, 1828)
Tomato hind



Cephalopholis urodeta (Forster, 1801)
Darkfin hind



Epinephelus andersoni Boulenger, 1903
Catface grouper



Epinephelus areolatus (Forsskal, 1775)
Areolate grouper



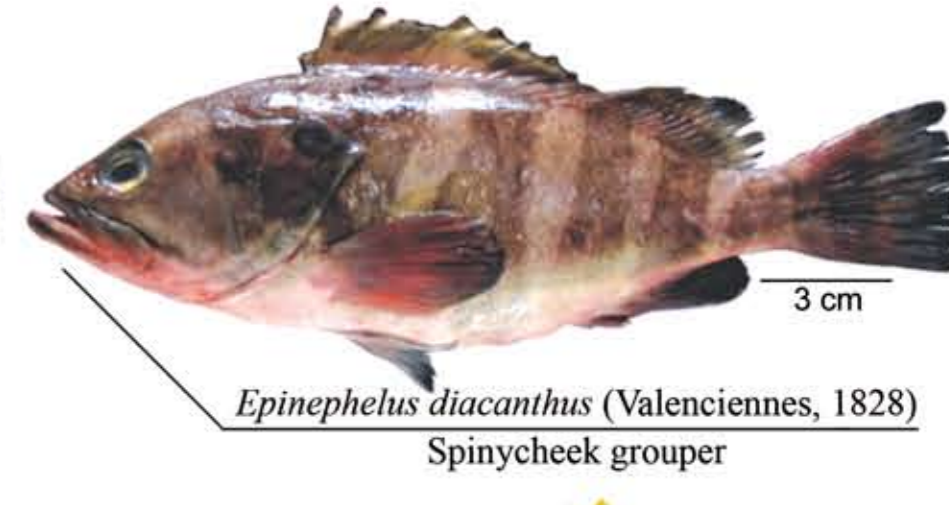
Epinephelus bleekeri (Vaillant, 1878)
Duskytail grouper



Epinephelus caeruleopunctatus (Bloch, 1790)
Whitespotted grouper



Epinephelus chlorostigma (Valenciennes, 1828)
Brownspotted grouper



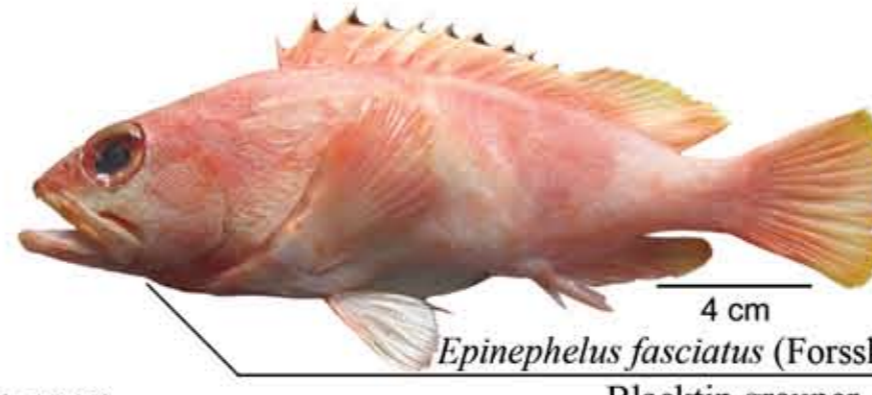
Epinephelus diacanthus (Valenciennes, 1828)
Spinycheek grouper



Epinephelus coioides (Hamilton, 1822)
Orange-spotted grouper



Epinephelus epistictus (Temminck & Schlegel, 1842)
Dotted grouper



Epinephelus fasciatus (Forsskal, 1775)
Blacktip grouper



Epinephelus flavocaeruleus (Lacepede, 1802)
Blue-and-yellow grouper



Epinephelus fuscoguttatus (Forsskal, 1775)
Brown-marbled grouper



Epinephelus lanceolatus (Bloch, 1790)
Giant grouper



Epinephelus latifasciatus (Temminck & Schlegel, 1842)
Striped grouper



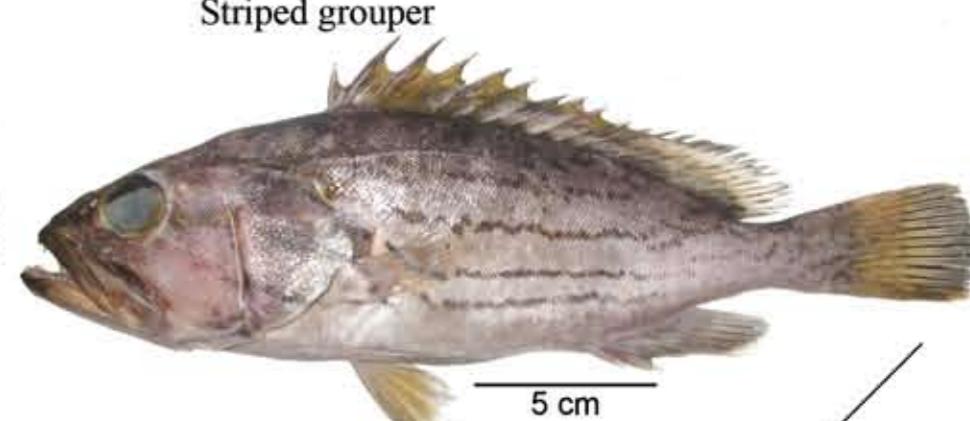
Epinephelus longispinis (Kner, 1864)
Longspine grouper



Epinephelus malabaricus (Bloch & Schneider, 1801)
Malabar grouper



Epinephelus merra Bloch, 1793
Honeycomb grouper



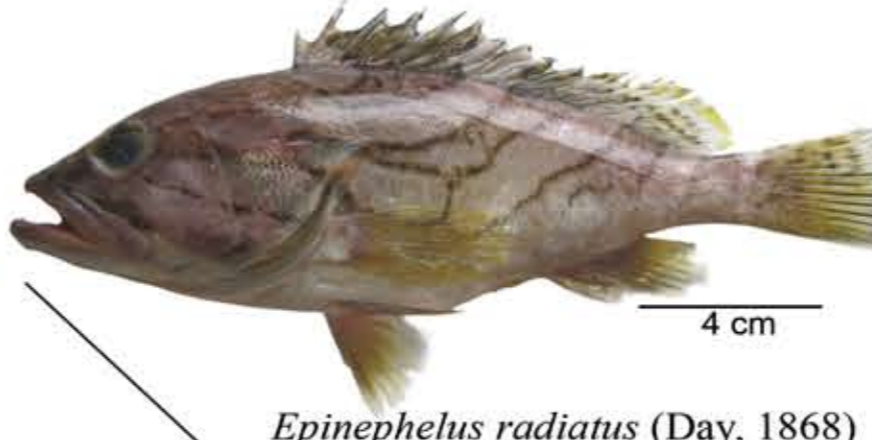
Epinephelus poecilnotus (Temminck & Schlegel, 1842)
Dot-dash grouper



Epinephelus polyphkadion (Bleeker, 1849)
Camouflage grouper



Epinephelus quoyanus (Valenciennes, 1830)
Longfin grouper



Epinephelus radiatus (Day, 1868)
Oblique-banded grouper



Epinephelus spilotoceps Schultz, 1953
Foursaddle grouper



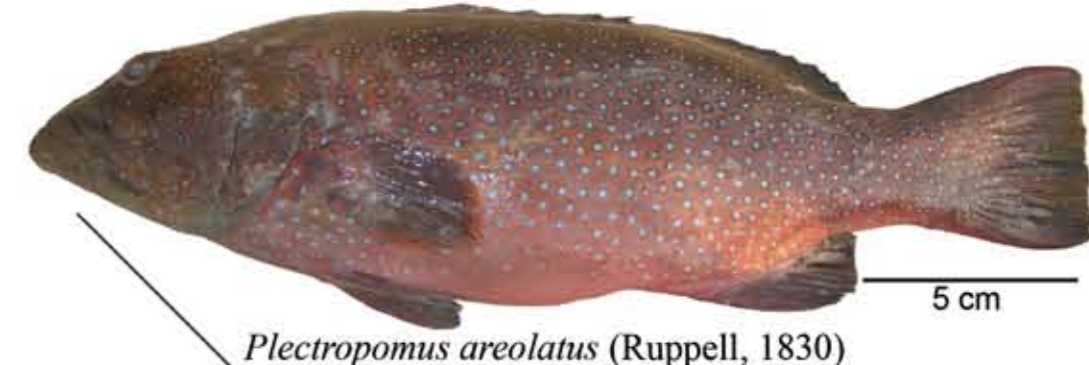
Epinephelus undulosus (Quoy & Gaimard, 1824)
Wavy-lined grouper



Epinephelus ongus (Bloch, 1790)
White-streaked grouper



Hyporthodus octofasciatus (Griffin, 1926)
Eightbar grouper



Plectropomus areolatus (Ruppell, 1830)
Squartail coral grouper



Plectropomus leopardus (Lacepede, 1802)
Leopard coral grouper



Variola albimarginata Baissac, 1953
White-edged lyretail



Variola louti (Forsskal, 1775)
Yellow-edged lyretail

तेयारी : रेखा जे. नायर, एस. दिनेश कुमार, सोमी कुरियाकोस और पी. प्रवीण

Prepared by: **Rekha J. Nair, S. Dinesh Kumar, Somy Kuriakose and P. Praveen**

Demersal Fisheries Division & Fishery Resource Assessment Division, Central Marine Fisheries Research Institute, P. B. No. 1603, Ernakulam North P. O., Cochin - 682 018

प्रकाशन : डॉ. जी. सेदा रावु, निदेशक, सी एम एफ आर आई. Published by: **Dr. G. Syda Rao, Director, CMFRI.**

Project: *Bioinventorisation of Coral Fishes of South India with Special Reference to Threats and Conservation Measures*

निधीयन : पर्यावरण एवं वन मंत्रालय, भारत सरकार. Funded by: Ministry of Environment and Forests, Government of India.